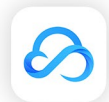


How to upgrade from EliteControl to EliteCloud

Old

New



- After 7 years of service the EliteControl APP is coming to an end. Recent server & smart device upgrades by other parties means that the EliteControl APP can no longer be maintained to an acceptable standard.
- This installer manual explains how to upgrade 'EliteControl' network modules to our new 'EliteCloud' IoT platform.

Important



It is recommended to upgrade your customers from the EliteControl APP to EliteCloud as part of their normal yearly (or Bi-yearly) alarm servicing. This will ensure their services are up to date without the likelihood of requiring any unscheduled site visits.

Update Tools - Click the following links to sign up & download the latest IoT Updater



Sign Up

Click here to register an account with EliteCloud



Get the APP



IoT Updater Tool

Click here to download the latest EliteCloud updater

Upgrade Options

Option 1 (Recommended)

Swap out the existing module

- Replacement IoT modules are available from Arrowhead Alarm Products. *Part numbers below:* 'SERVICE IoT-MODULE' or 'SERVICE ESL-2 IoT'

These will be charged to your account, or require payment in advance (for non account holders). A credit will be issued when the old EliteControl module is returned to AAP in operating condition.

- Alternatively it is advised to update modules in a stable environment (such as your office or workshop) before going to site. This will also help ensure a quick & simple upgrade when you are on site.

Option 2

Update the existing module on site

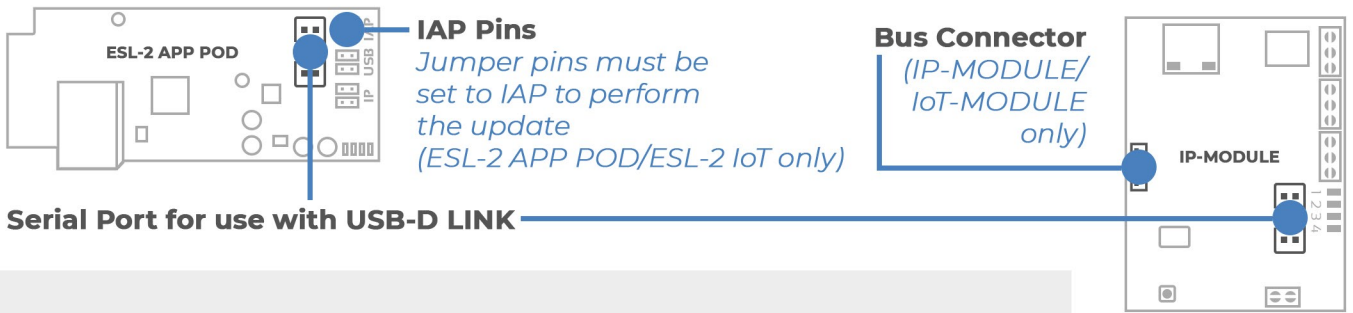
- It is recommended to bring a previously updated IoT module to site in the possible event that the existing EliteControl module fails to update.

Update Requirements

- PC with a 'USB-A' port & internet connection
- USB D-LINK Upload/Download cable
- ESL/V9 or Runner control panel
- ESL-2 APP POD or IP-MODULE
- iPhone (iOS14 or above) or Android (10 or above) with an internet connection.
- IoT Updater (V1.0.18 or above) - Link above
- EliteCloud account - Link above

Module Overview

- **ESL-2 APP POD** upgrades to the **ESL-2 IoT**.
Must be V2.10.3111 or above to update
- **IP-MODULE** upgrades to the **IoT-MODULE**
Must be V2.10.3111 or above to update



Update Process

Step 1



Hardware connections & Jumper Pins

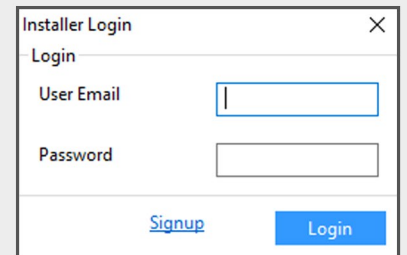
- Connect your PC USB to 'ESL-2 APP POD' or 'IP-MODULE' Serial port
- Set 'ESL-2 APP POD' 'Jumper Pins' to 'IAP' (as detailed above).

Step 2



Open 'IoT Updater' software

- Sign into the IoT Updater software using your EliteCloud account.
- Make sure your PC is connected to the internet.

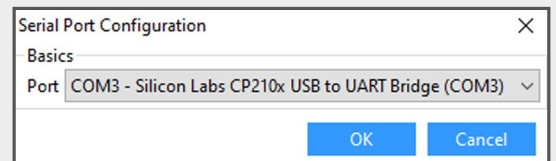


Step 3



Communication

- Select the COM/USB port that the USB-D LINK is connected to, then press 'OK'.

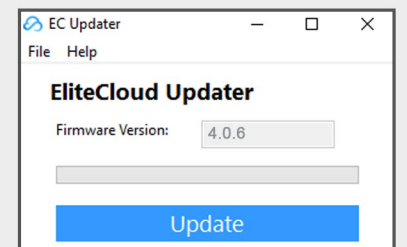


Step 4



Update

- Make sure the network module is connected to the control panel & that both are powered, then press the 'Update' button.

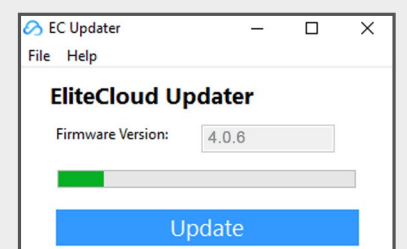
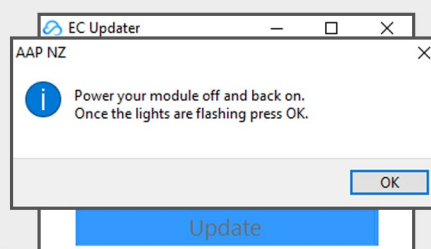


Step 5



Power Cycle

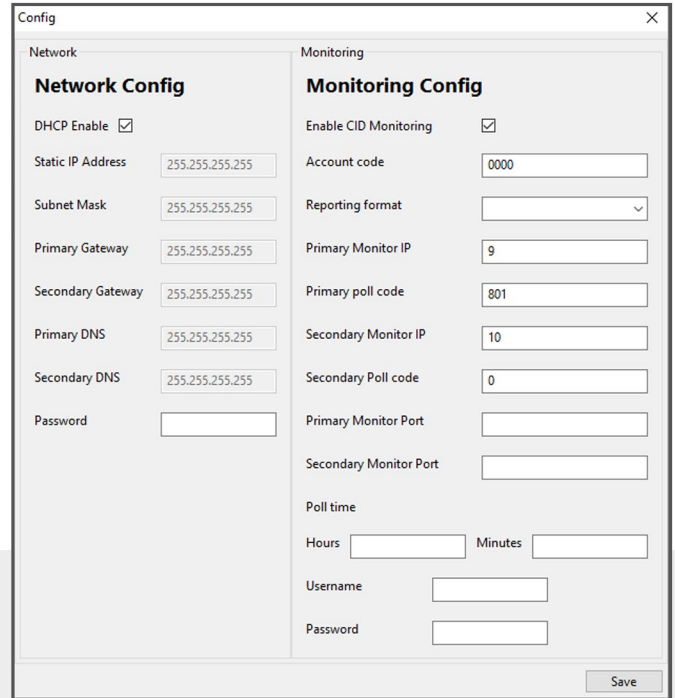
- The IoT Updater software may ask you to power cycle the 'ESL-2 APP POD' or 'IP-MODULE'. After power is restored the green LED (LED 3) should be fast flashing.
- Once this green LED (LED 3) is fast flashing, press 'OK' to proceed with the update.



Step 6

Network & Monitoring Configuration

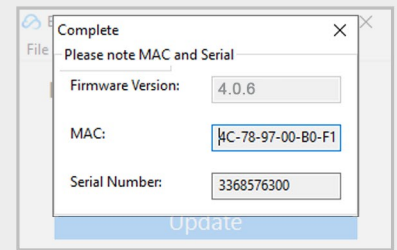
- Once the update is complete the following screen will appear. Here you can set DHCP (default) or static IP connection.
- IP monitoring details can be entered on this page, however it is recommended to configure IP monitoring from the EliteCloud app once the site has been set up on your smartphone.
- Press 'Save' to continue.



Step 7

Site Details

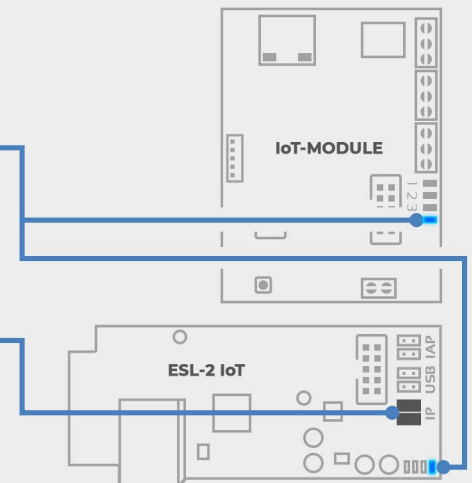
- The new MAC & Serial will now be displayed. Make sure you document these details as they are used to set up the site on the EliteCloud APP. These details will also be sent to the email that is linked to your EliteCloud account.



Step 8

Troubleshooting & Programming Dashboard

- LED 4 (blue LED) should now be fast flashing to indicate that the module is updated & online. If LED 4 is not fast flashing make sure the control panel & network module are still powered.
- Also make sure that the IoT module is connected to the internet.
- After the update is complete, make sure you set the jumper pins to 'IP' (ESL-2 IoT only). This will allow the module to accept over the air updates when the programming dashboard is available. The IoT-MODULE requires the 'IP-LOOM' for over the air updates.



EliteCloud App



ESL-2 IoT Manual



IoT-MODULE Manual